

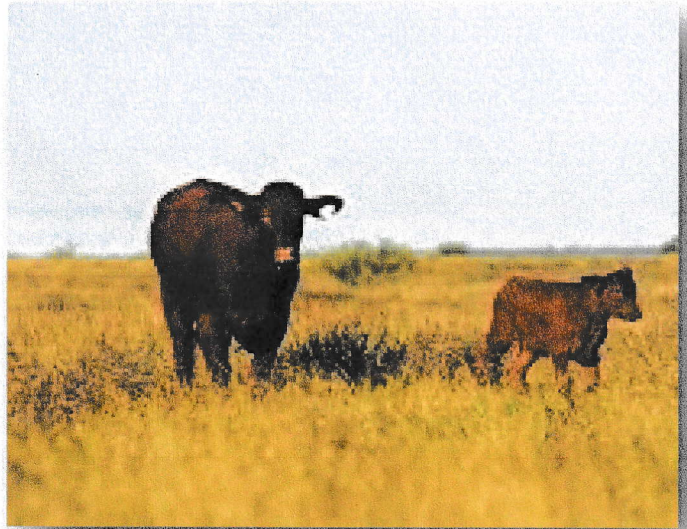
JEDNUKE DRY LICK

Jednuke is a loose, dry cattle lick ideal for:

- Weaners
- Fertility
- Milk production
- Herd health

Use in phosphorus deficient country when cattle are grazing dry season pasture.

Order in 1 tonne bulka or 25kg bags.



A moderate phosphorus and urea lick for coastal country when pastures are maturing or dry, and protein supplementation is required. Contains high levels of sulphur and sodium for rumen health and vital bodily processes.

Analysis

Protein	31.8%
Crude Protein (min)	6.0% (min)
Equiv Crude Protein	25.8%
Urea	9%
Sulphur	3.0%
Crude Fat (min)	1%
Crude Fibre (max)	3%
Phosphorous	4.1%
Calcium	3.5%
Salt	30%
Copper	300mg/kg
Cobalt	12mg/kg
Zinc	1125mg/kg
Selenium	5mg/kg
Manganese	1000mg/kg

Feed to a rate of approximately 200 grams per head per day. Seek advice if unsure.

Feed in conjunction with pasture or hay, and ensure cattle have access to clean, fresh drinking water at all times.

WARNING

- UREA CAN KILL CATTLE IF CONSUMED TOO QUICKLY.
- KEEP DRY AT ALL TIMES.
- DO NOT FEED THIS SUPPLEMENT TO STARVING, THIRSTY OR SALT DEFICIENT CATTLE.
- FEED ONLY TO CATTLE.

Store in a cool, dry place. Product expires 6 months from date of manufacture.

Designed, manufactured and distributed from Nebo, Central Queensland, by

RUMINANT **edge**
Quality **Nutritional** Supplements

For further advice contact **Rob Sands (Nutritionist) - 0418 884 908** or **John Lee (Technical Sales) - 0435 823 400**